

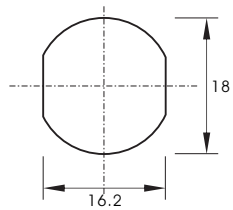
Treatment of some common problems

Problem	Primary cause	Way to solve the problem
When input the password, alarm Beep... twice Mean while 🚫 🔒 blink one time	Too low voltage	Replace batteries
When input the password, alarm Beep... meanwhile signal 🔒 is on, lock cannot be opened	Knob is not in the right position	Turn knob in the right position
Touch button without sound, lock can be opened	Buzzer broken	Change buzzer

Fixing hole size & installation

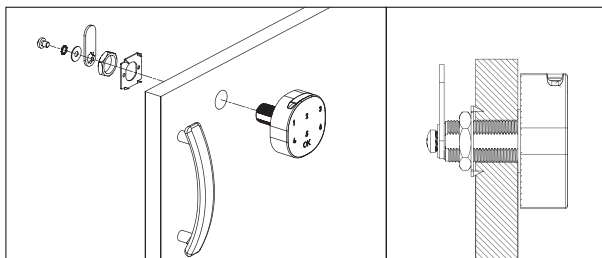
► Fixing hole size

Unit: mm



(1) Wood/Steel

▼ Installation



(2) Wood



SMART DIGITAL FURNITURE LOCK



OZFL-401-PW

Packing List

S/N	Description	Quantity	Remark
1	Front panel lock	1	
2	Cam	1	
3	Countersunk screws packet	1	
4	User Installation manual	1	

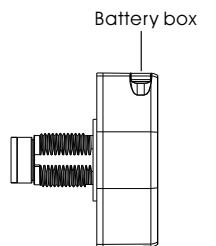


Ozone Secutech Pvt. Ltd.

548, Phase V, Udyog Vihar, Gurugram, Haryana-122016, India
 Visit : www.ozone-secutech.com | Email : ccsafes@ozone-india.com
 India Customer Care : +91-11-45576666



Touch panel



USB-KEY Interface

Low voltage indicator light

Unlocking indicator light

How to operate

■ Lock & unlock



Unlock

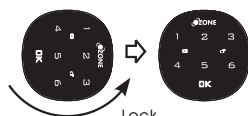
Unlock

1 > Input factory default password "1234+OK", or input factory default management password "4321+OK"

2 > Buzzer gives out a long beep... sound

3 > When the green indicator beep... light is on

4 > Rotate the knob within 3 seconds to open the lock



Lock

Lock

Rotate back the knob to lock position

* Note:

- When password is wrong alarming sound beep... 3 times.
- When lock shows this signal means low voltage
- When input management password to unlock, user password will be changed back to default 1234

Setting

1- Change password

1 > Input current user password +OK or management password+OK, buzzer gives out a long beep... sound, will be on

2 > Press OK at least 2 seconds, flash

3 > Input new password, press OK, when you heard a long beep... sound means password already been changed.

* Note:

- Password can be consisted of 4-15 digits, management password and user password can not be the same password

2- Turn on public mode, set temporary password

▶ Turn on public mode

1 > Input current management password + OK, buzzer gives out a long beep... sound, unlocking indicator lights on

2 > Press OK at least 2 seconds, unlocking indicator light blink, press OK again.

3 > Input "4 4", press OK when you heard a long beep... sound, means public mode already been set.

▶ Set temporary password

1 > Press OK. Unlocking indicator light will blink

2 > Input the new password consisted of 4-15 digits

3 > press OK to unlock, is on with a long beep... sound, temporary password already been set.

* Note:

- flash one time every 3 seconds means the lock has already be taken
- Temporary password can be used for 1 time only

3- Turn off public mode

1 > Input current management password + OK, buzzer gives out a long beep... sound, unlocking in indicator light is on

2 > Press OK at least 2 seconds, unlocking indicator light blink, press OK again.

3 > Input "4 3", press OK, when you heard a long beep... Sound, means public mode already been turned off.

4- Turn on/off Fake Pin code function

1 > Input current management password + OK, buzzer gives out a long beep... sound, unlocking indicator light is on

2 > Press OK at least 2 seconds, unlocking indicator light blink, press OK again.

3 > Input "4 2", press OK, when you heard a long beep... sound means Fake Pin code mode already been turned on.

Input "4 1", press OK, when you heard a long beep... sound means Fake Pin code mode already been turned off.

* Note:

- Introduced with Anti-Theft Technology and Fake PIN password function you can input any code(s) before or after the real password to prevent the real password being beeped. Maximum 16 digits.

Features

1 > When password been forgotten, you can get the decoded number by providing the code on the lock body to the company (customer care) to decode. The password will be changed back to the original management password "4321", user password "1234"

When user password been forgotten, you can input master password, the user password will be changed back to the original user password "1234"

2 > Auto-alarm will be activated when input wrong password 4 times and the lock will be freezed for 60 seconds.

3 > Automatic power shortage prompts (When lock show this signal). The lock cannot be operated when the voltage is very low

4 > Equipped with 3V Cr2032 batteries, the last password will not be lost after changing the battery.