



OZ-ATOM-22-i-LIFE



Built-in Camera



Built-in Camera



Remotely Unlock\*



Universal Handle



Auto Locking



USB Battery Backup

\*Unlock Remotely using OzoLife App

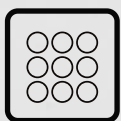
# MULTIPLE WAYS TO UNLOCK YOUR DOOR



OzoLife App



Fingerprint



Password



Emergency Key



RFID Card

## KEY FEATURES



Built-in Camera



Doorbell Function



Auto Locking



Remotely Unlock



Smart Freeze



Volume Setting



Anti-theft Password



Low Battery Indicator



Audit Trail



Auto Secure Alarm



USB Battery Backup



Voice Guided Operation



Passage Mode



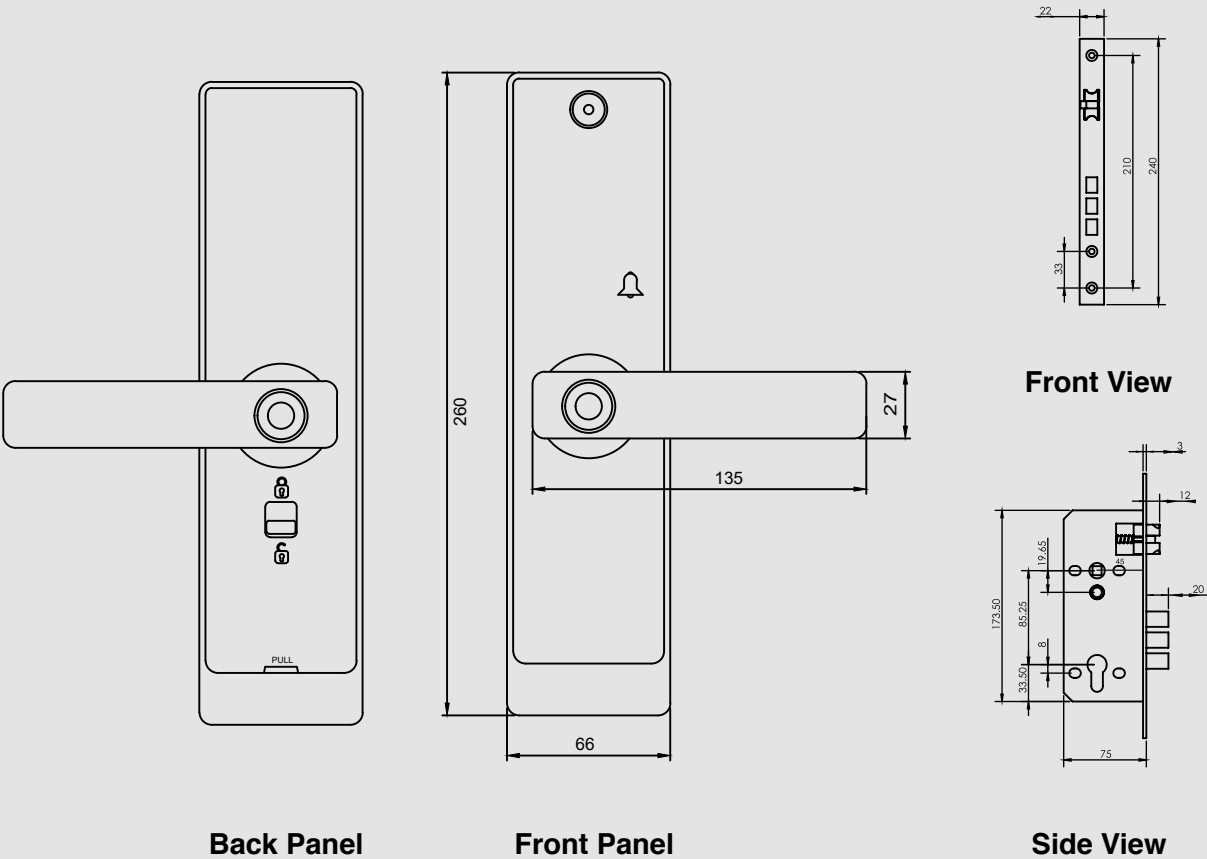


**TWO WAY COMMUNICATION  
WITH OZOLIFE APP**

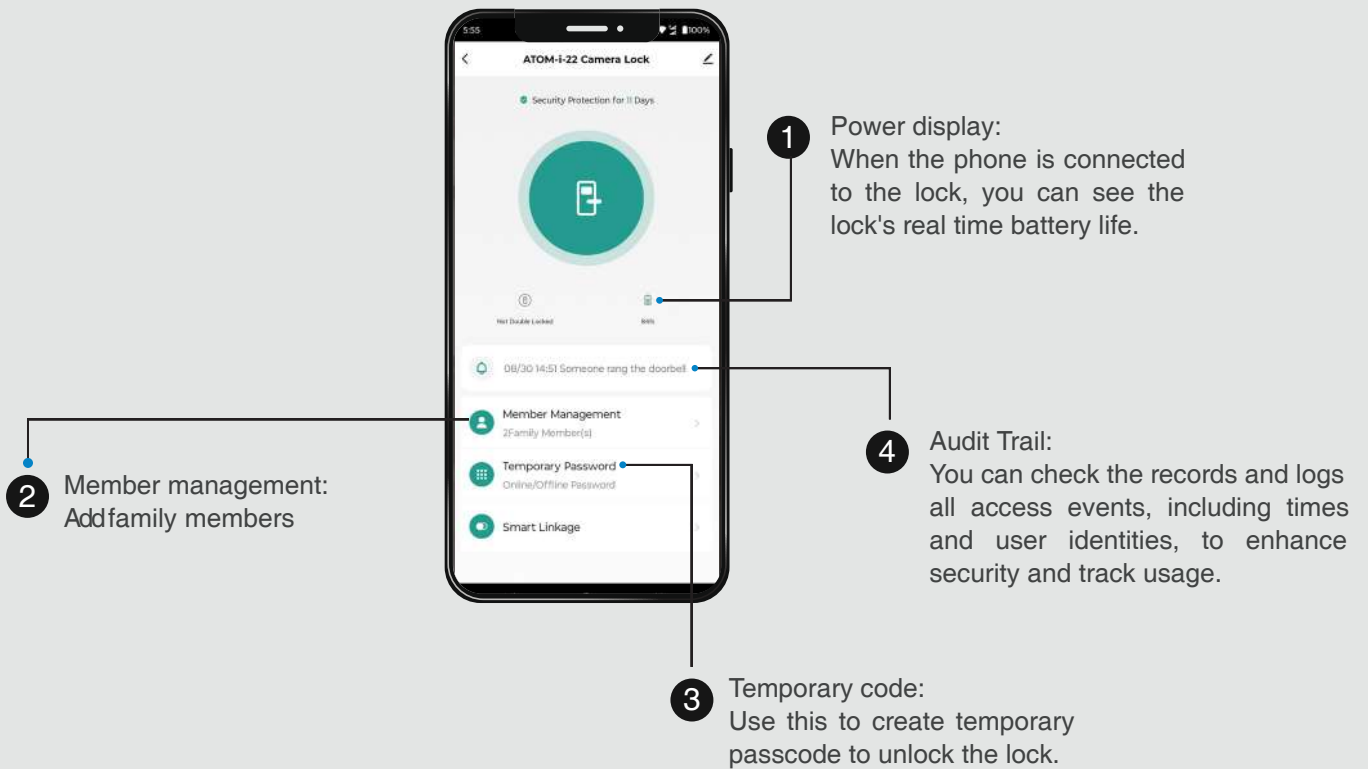
# PRODUCT STRUCTURE



# TECHNICAL DRAWINGS



# USER INTERFACE



# SPECIFICATIONS

Front Panel Lock Dimension	260 x 66 x 22 mm
Lock Body Dimension	45 - 85 mm with tribolt
Lock Body Material	Stainless Steel
Lock Material	Aluminium Alloy + ABS
Colour	Black
Batteries	AA (4 Pcs) Alkaline Batteries
Lock Weight	1.2 kg approx.
Door Thickness	30 - 80 mm
Door Type	Wooden/Metal
Storage Capacity	100 Fingerprints + 100 Passwords + 100 RFID Cards





**IDEAL FOR  
MAIN DOOR**



**COMPATIBLE  
WITH**

**WOODEN DOORS**



**METAL DOORS**