

# OUTLINER EN - 44

Glass-to-Glass 180° Shower Enclosure

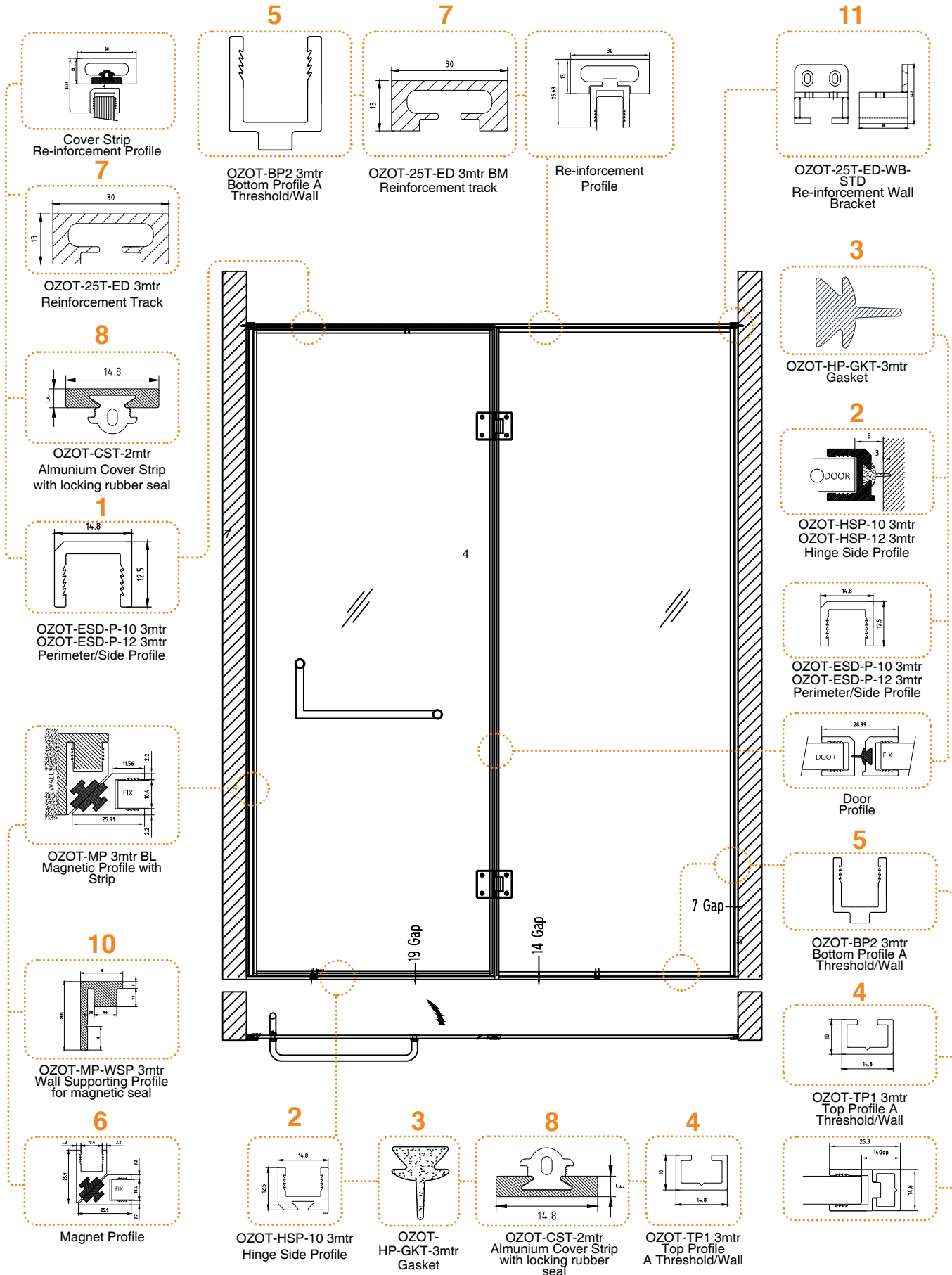


## For 10 MM Glass Thickness

S. No.	Code	Descriptions	Length	QTY.
1	OZOT-ESD-P-10 3mtr BM	Perimeter/Side Profile	3Mtr	1 Nos.
2	OZOT-HSP-10 3mtr BM	Hinge Side Profile	3Mtr	2 Nos.
3	OZOT-HP-GKT-3mtr	Gasket	3Mtr	1 Nos.
4	OZOT-TP1 3mtr BM	Top Profile A Threshold/Wall	3Mtr	2 Nos.
5	OZOT-BP2 3mtr BM	Bottom Profile A Threshold/Wall	3Mtr	2 Nos.
6	OZOT-MP 3mtr BL	Magnetic Profile with Strip	3Mtr	1 Nos.
7	OZOT-25T-ED 3mtr BM	Reinforcement track	3Mtr	1 Nos.
8	OZOT-CST 3mtr BM	Aluminium Cover Strip with locking rubber seal	3Mtr	1 Nos.
9	OZOT-25T-ED-WB-STD BM	Re-inforcement Wall Bracket	N/A	2 Nos.
10	OZOT-MP WSP	Wall supporting profile for magnetic seal (WtoG)	3Mtr	1 Nos.

# TYPICAL LAYOUT

Demountable Partitioning System



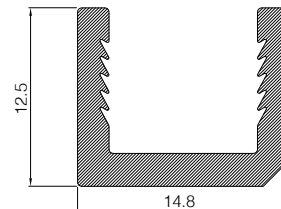
# OUTLINER EN - 11/22/33/44/55

## Profiles



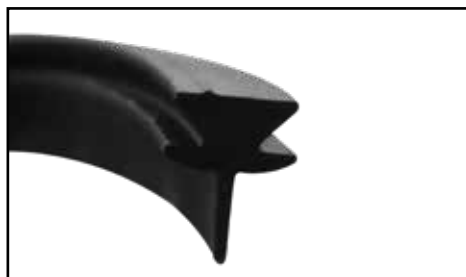
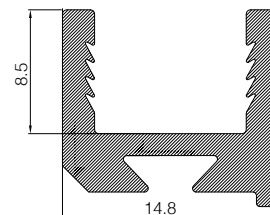
**OZOT-ESD-P-10 3mtr BM**  
Outliner EDGE PROFILE

- Outliner sleek Profile for cladding the edge of glass.
- 12.5X14.8 ALUMINIUM EXTRUDED PROFILE.
- No Screws & Corner cleat is required to fix with glass
- Can be fix with double side tape only.
- Suitable glass thickness 10mm
- Max Profile length 3000
- Suitable for Shower, Sliding Folding and Patch fitting applications.
- Material: Aluminium.
- Finish: BM & AN
- Other Finish can also be available on request.



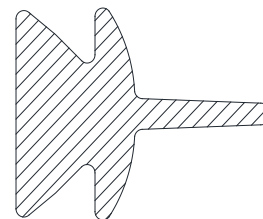
**OZOT-HSP-10 3mtr BM**  
Outliner HINGE PROFILE

- Outliner Hinge Profile for cladding the edge of Hinge side.
- 12.5X14.8 ALUMINIUM EXTRUDED PROFILE.
- No Screws & Corner cleat is required to fix with glass
- Can be fix with double side tape only.
- Suitable glass thickness 10mm
- Max Profile length 3000
- Suitable for Shower, Sliding Folding and Patch fitting applications.
- Material: Aluminium.
- Finish: BM & AN
- Other Finish can also be available on request.



**OZOT-HP-GKT-3mtr**  
EPDM GASKET

- EPDM Seal for Outliner Hinge Profile.
- Minimize the gap between wall/Floor and profile,



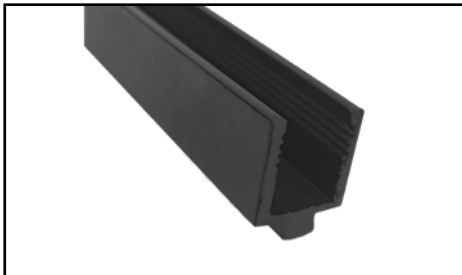
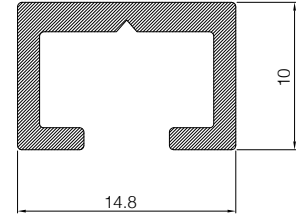
# OUTLINER EN - 11/22/33/44/55

## Profiles



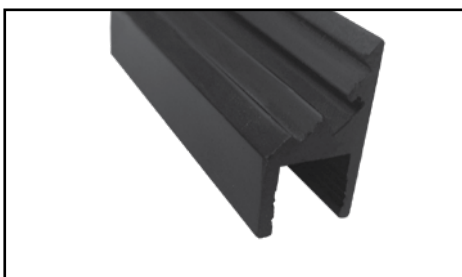
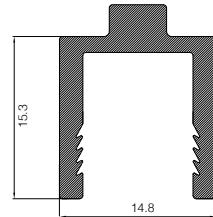
**OZOT-TP1 3mtr**  
Top Profile A  
Threshold/Wall

- Outliner sleek Profile for cladding the edge of glass.
- 12.5X14.8 ALUMINIUM EXTRUDED PROFILE.
- No Screws & Corner cleat is required to fix with glass
- Can be fix with double side tape only.
- Suitable glass thickness 10mm
- Max Profile length 3000
- Suitable for Shower, Sliding Folding and Patch fitting applications.
- Material: Aluminium.
- Finish: BM & AN
- Other Finish can also be available on request.



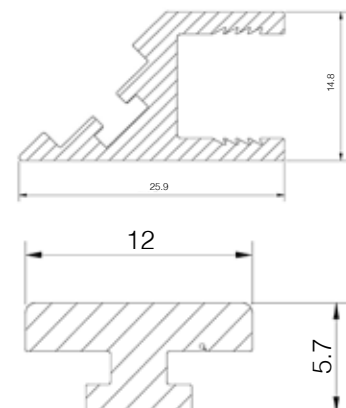
**OZOT-BP2 3mtr**  
Bottom Profile A  
Threshold/Wall

- Wall connecting profile
- 15X14.8 ALUMINIUM EXTRUDED PROFILE.
- Can be fix to wall or floor with Screws
- Max Profile length 3000
- Material: Aluminium.
- Finish: BM & AN
- Other Finish can also be available on request.



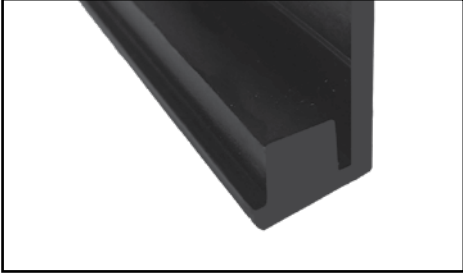
**OZOT-MP 3mtr BL**  
MAGNETIC PROFILE

- Magnetic Profile
- 25.9X14.8 ALUMINIUM EXTRUDED PROFILE.
- No Screws & Corner cleat is required to fix with glass
- Can be fix with double side tape only.
- Suitable glass thickness 12mm
- Max Profile length 3000
- Material: Aluminium.
- Finish: BM & AN
- Other Finish can also be available on request.

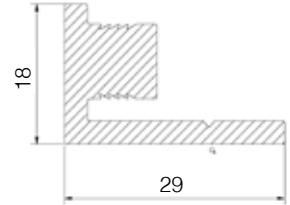


# OUTLINER EN - 11/22/33/44/55

## Profiles



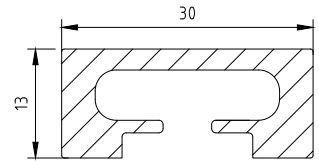
- Wall Support Profile for Magnetic Profile
- 25.9X14.8 ALUMINIUM EXTRUDED PROFILE.
- No Screws & Corner cleat is required to fix with glass
- Can be fix with double side tape only.
- Suitable glass thickness 10mm
- Max Profile length 3000
- Material: Aluminium.
- Finish: BM & AN
- Other Finish can also be available on request.



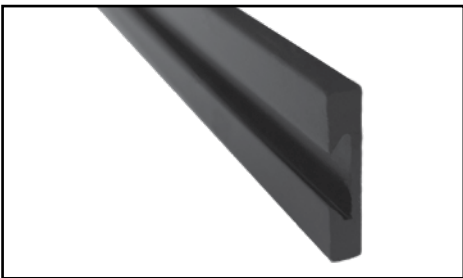
**OZOT-MP-WSP 3mtr**  
WALL SUPPORT PROFILE FOR MAGNETIC PROFILE



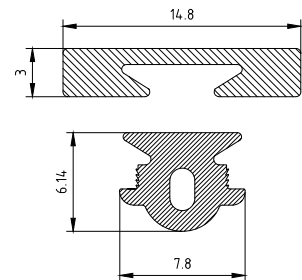
- Stabilizing Support Profile
- 13X30ALUMINIUM EXTRUDED PROFILE.
- Max Profile length 3000
- Material: Aluminium.
- Finish: BM & AN
- Other Finish can also be available on request.



**OZOT-25T-ED 2/3mtrs**  
STABILIZING PROFILE



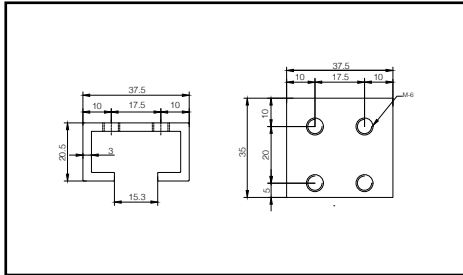
- Cover Strip Stabilizing Support Profile.
- Cover Strip Cleats



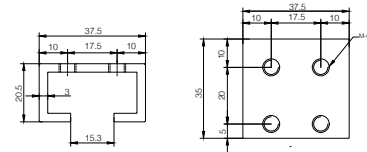
**OZOT-CST 3mtrs**  
ALUMINIUM COVER STRIP WITH  
LOCKING RUBBER SEAL

# OUTLINER EN - 11/22/33/44/55

## Profiles



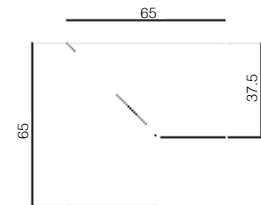
- Wall Bracket for Stabilizing Support Profile
- Material: Aluminium.
- Finish: BM & AN
- Other Finish can also be available on request.



**OZOT-25T-ED-WB-STD**  
WALL BRACKET-PART-A



- CORNER CONNECTOR FOR STABILIZING PROFILE for 90 •
- Degree Shower
- Material: Aluminium.
- Finish: BM & AN
- Other Finish can also be available on request.



**OZOT-25T-ED-90-STD**  
CORNER CONNECTOR FOR STABILIZING  
PROFILE

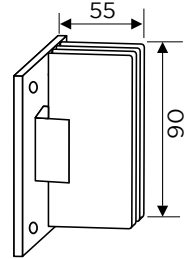
# OUTLINER

Outliner EN-11/22/33/44/55



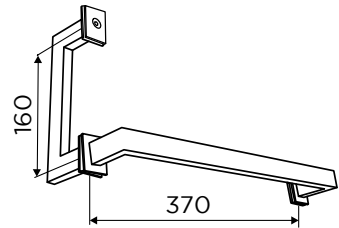
**OSH-1S STD BM**  
Wall-To-Glass Hinge

- Seamless Design
- Water Tight Fitting Ensures No Water Leakage
- Minimum Gap
- Snapfit Cover Cap
- Suitable for glass thickness: 8-10mm



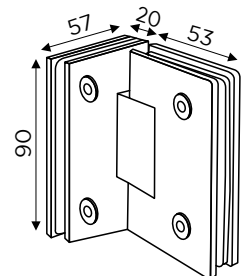
**OGH-TB-ED STD BM**  
Towel Bar With Handle

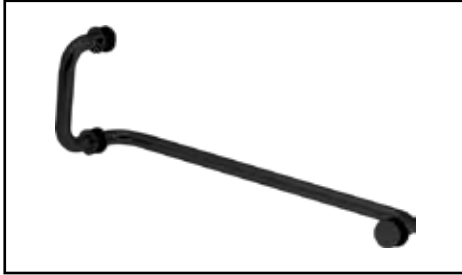
- Water Tight Fitting Ensures No Water Leakage
- Minimum Gap
- Snapfit Cover Cap
- Suitable for glass thickness: 8-10mm



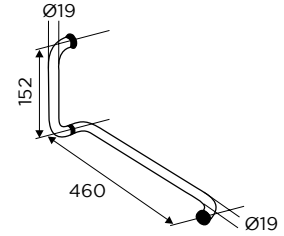
**OSSH-44-ED STD BM**  
Glass-to-Glass Hinge 90

- Secure Holding with Glass
- Door Weight Max. 40 Kgs
- With Gaskets to Prevent glass Damage
- Door Width Max. 750mm
- Suitable for Glass Thickness 8/10mm
- SS 304 Grade Material
- Matt Black Finish





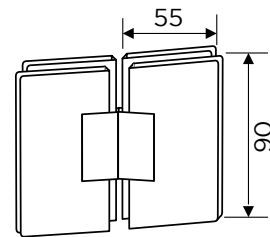
- Seamless Design
- Water Tight Fitting Ensures No Water Leakage
- Minimum Gap
- Snapfit Cover Cap
- Suitable for glass thickness: 8-10mm



**OGH-TB-1 STD BM**  
Towel Bar with Handle



- Seamless Design
- Water Tight Fitting Ensures No Water Leakage
- Minimum Gap
- Snapfit Cover Cap
- Suitable for glass thickness: 8-10mm



**OSH-2S STD BM**  
Glass-to-Glass 180° Hinge